

8SZ60SY / NB6SZ60SY / NBSZ60SY

REPLACES: 10.03.06

REVISED: 11.07.10

FITTING INSTRUCTIONS

**SUZUKI JIMNY 8/05- T6 (VIN 003) TYPE 8,
63mm SERIES 2 NUDGE BAR and 76mm NUDGE BAR
VEHICLE FRONTAL PROTECTION SYSTEM (VFPS)
FOR AIR BAG & ADR COMPLIANT VEHICLES**

Check installation hardware before commencing.

1. Lift bonnet.
2. Bumper cover to be removed. Three plastic clips from top of bumper cover, one PK screw (each side) from top of bumper cover side returns, four plastic clips (each side) from plastic inner guards, three PK screws along lower bumper cover, one PK screw (each side) of number plate area. Slide bumper cover forward off vehicle.
NOTE: Disconnect fog lights if fitted.
3. Position steel mounting plates (supplied) on chassis with top of steel mounting plate flush with top of chassis and rear upper section approximately 5mm forward of chassis body mount. Clamp in position. **See figure 1.** Ensure steel mounting plates are also aligned with each other.
4. With steel mounting plates held firmly in position, drill three 10mm holes through outer chassis rails (each side). **See figure 2.**
5. Remove clamp and steel mounting plates. ***Blow all filings from chassis and treat all exposed metal with a rust inhibitor.***
6. Bend wire on 3/8 x 1 ¼ bolts (supplied) to access drilled holes from inside of chassis. Feed top bolt on driver's side from inside front of chassis. **See figure 3.** Feed top bolt on passenger side from outside front of chassis. **See figure 4.**
7. Place steel mounting plates on chassis over top bolts. Use 3/8 flat washers, spring washers and nuts (supplied) **FINGER TIGHTEN ONLY. See figure 5.**
8. Feed two lower bolts (supplied) (each side) into chassis and out through steel mounting plates. Use 3/8 flat washers, spring washers and nuts (supplied). **FINGER TIGHTEN ONLY.**
9. Ensuring steel mounting plates are in correct position and aligned with each other, **TIGHTEN ALL NUTS. See figure 6.**
10. Bend wire on bolts tight around steel mounting plate on passenger side and tight around inside chassis edge on driver's side to avoid any rattling and/or vibration. **See figures 7 and 8.**
11. Approximately 45mm is to be trimmed from lower bumper cover. Position bumper cover on vehicle and steel mounting plates, mark where trimming is required for bumper cover to go back in correct position. **See figure 9.** Remove bumper cover and trim approximately 45mm x 10mm slots. **See figure 10.**
12. Refit bumper cover to vehicle. Reconnect fog lights (if fitted).

13. Attach protection bar to outside of steel mounting plates. Use 3/8 x 1 ½ bolts and flat washers on 300mm wire (supplied) to access front holes. Use 3/8 flat washers, spring washers and nuts (supplied). Use 3/8 x 1 ½ bolts, flat washers, spring washers and nuts (supplied) for rear holes. **FINGER TIGHTEN ONLY.**
14. Align protection bar with vehicle. Position as high as possible on steel mounting plates for maximum ground clearance. **See figures 11, 13 and 15 for side views and figures 12, 14 and 16 for front views. TIGHTEN ALL BOLTS and NUTS.**

ENSURE NUMBER PLATE IS CLEARLY VISABLE

Note: When fitting/refitting the licence plate to the vehicle, ensure there is no obstruction to licence plate vision in accordance with local authorities. If required relocate licence plate to an alternate location.

Further VFPS Notes:

- a) Do not attach VFPS to the vehicle using anchorages not intended for this purpose (e.g. engine mounting bolts).
- b) Do not use this product for any vehicle make or model, other than those specified by the VFPS manufacturer.
- c) Do not remove the plaque or label from the VFPS.
- d) Do not modify the structure of the VFPS in any way.
- e) No accessory or fitment should project forward of the VFPS forward profile.
- f) **ENSURE THESE INSTRUCTIONS ARE LEFT WITH VEHICLE OWNER AND/OR OPERATOR.**

IMPORTANT INFORMATION

Periodically check bolts and nuts for correct tightness, especially if travelling on rough roads

FITTING KIT

2 – Steel mounting plates.	10 – 3/8 nuts.
6 – 3/8 x 1 ¼ bolts and flat washers on 250mm wire.	12 – 3/8 flat washers.
2 – 3/8 x 1 ½ bolts and flat washers on 300mm wire.	10 – 3/8 spring washers.
2 – 3/8 x 1 ½ bolts.	

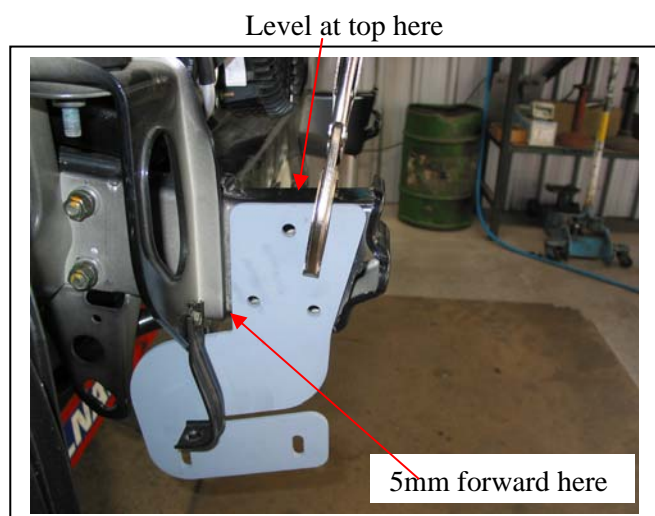


Figure 1 – Driver's side shown



Figure 2 – Shown drilling driver's side chassis



**WORLD'S BEST
ALLOY BULLBARS**

East Coast Bullbars (ECB Pty Ltd)

Tel: 07 3897 5700

Fax: 07 3283 1168

ecb@ecb.com.au www.ecb.com.au

29 Snook St
Clontarf QLD 4019
Australia

Po Box 122
Margate QLD 4019
Australia

3/8 x 1 1/2 bolt



Figure 3 – Drivers side shown

3/8 x 1 1/2 bolt

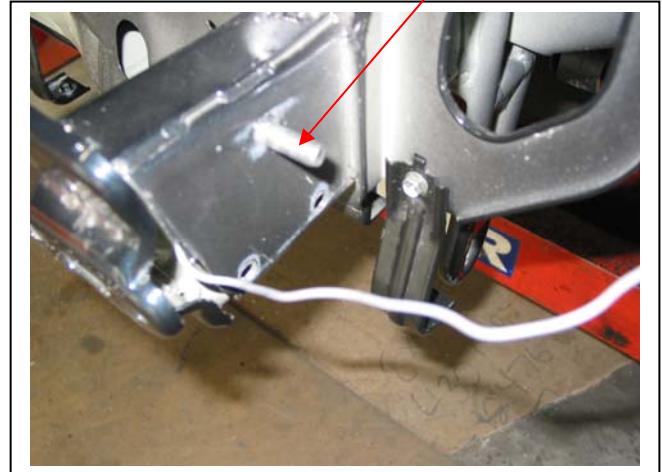


Figure 4 – Passenger side shown



Figure 5 – Passenger side shown

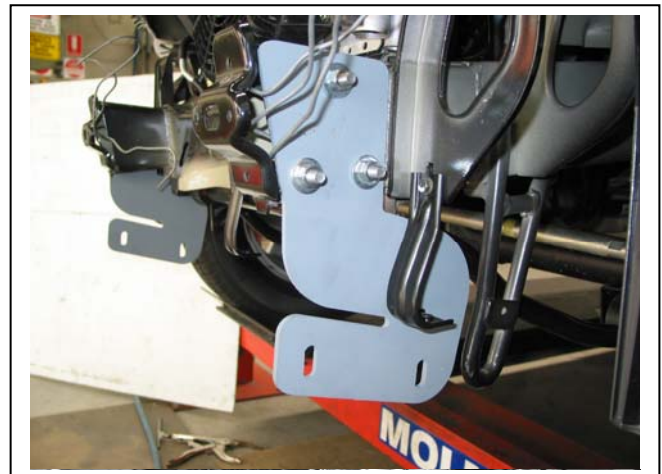


Figure 6 – View from Passenger side



Figure 7 – Passenger side shown

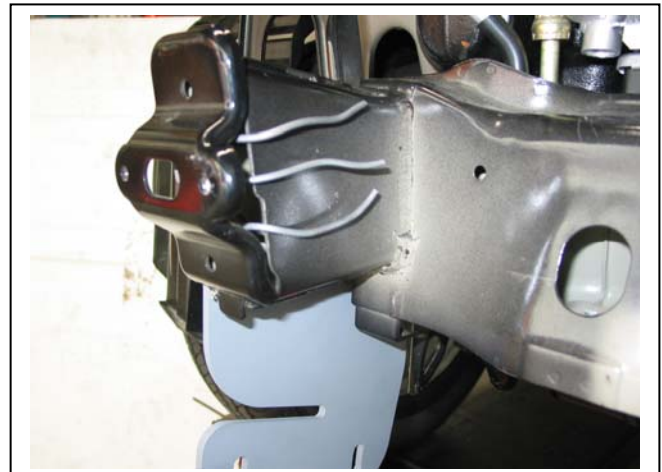


Figure 8 – Driver's side shown



**WORLD'S BEST
ALLOY BULLBARS**

East Coast Bullbars (ECB Pty Ltd)

Tel: 07 3897 5700

Fax: 07 3283 1168

ecb@ecb.com.au www.ecb.com.au

29 Snook St
Clontarf QLD 4019
Australia

Po Box 122
Margate QLD 4019
Australia

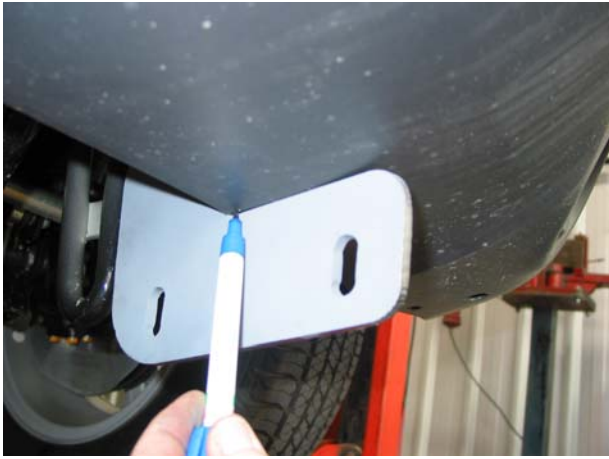


Figure 9 – Mark each side of steel mounting plates

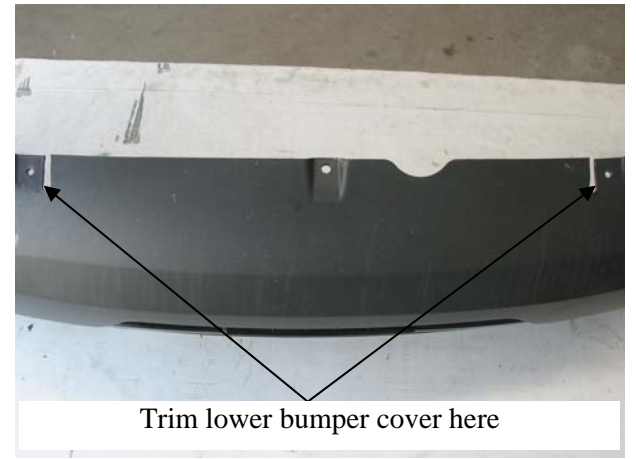


Figure 10



Figure 11 – 76mm Nudge Bar side view shown



Figure 12 – 76mm Nudge Bar front view shown



Figure 13 – 63mm Series 2 Nudge Bar side view shown



Figure 14 – 63mm Series 2 Nudge Bar front view shown



**WORLD'S BEST
ALLOY BULLBARS**

East Coast Bullbars (ECB Pty Ltd)

Tel: 07 3897 5700

Fax: 07 3283 1168

ecb@ecb.com.au www.ecb.com.au

29 Snook St
Clontarf QLD 4019
Australia

Po Box 122
Margate QLD 4019
Australia



Figure 15 – Type 8 side view shown



Figure 16 – Type 8 front view shown



East Coast Bullbars (ECB Pty Ltd)

Tel: 07 3897 5700

Fax: 07 3283 1168

ecb@ecb.com.au www.ecb.com.au

29 Snook St
Clontarf QLD 4019
Australia

Po Box 122
Margate QLD 4019
Australia

We value your comments

Dear Fitter,

ECB would like to know how you went with the installation of this product. We value your comment and may need to contact you to clarify some details so please complete your contact details clearly.

We would appreciate if you could complete as many of the following details as possible.

Your Name:	Your contact No.
Product Part No.	Product Invoice No.
Product Description:	Make, model, and year of vehicle:
Product Work Order No.	Company your from/Company product purchased from:

Date of Fitment: ____/____/____

Was the fitting hardware supplied complete?

Yes

☐

No

☐

If no what was not supplied

Did the installation go well?

Yes

☐

No

☐

Please provide comments

Please draw diagrams if you need to.

Post to

Reply Paid 122

PO Box 122

Margate QLD 4019

Fax to

(07) 3283 1168

DESPATCH CHECKLIST

8SZ60SY / NB6SZ60SY / NBSZ60SY

Work Order #	
Finish:	
Transport:	
Due Date:	

- ☐ 2 – Steel mounting plates.
- ☐ 1 – Bolt Kit.

**See other side of
this page for
photos of all
mounts**



Is this product “the best it can be” Yes _____ / _____
Wrapper's initials / Checker initials
 If NO fix before continuing

All parts checked and completed by:

Nut and bolts: _____ Date ____/____/____

Order control: _____ Date ____/____/____

Final wrap check: _____ Date ____/____/____



**WORLD'S BEST
ALLOY BULLBARS**

East Coast Bullbars (ECB Pty Ltd)

Tel: 07 3897 5700

Fax: 07 3283 1168

ecb@ecb.com.au www.ecb.com.au

29 Snook St
Clontarf QLD 4019
Australia

Po Box 122
Margate QLD 4019
Australia

